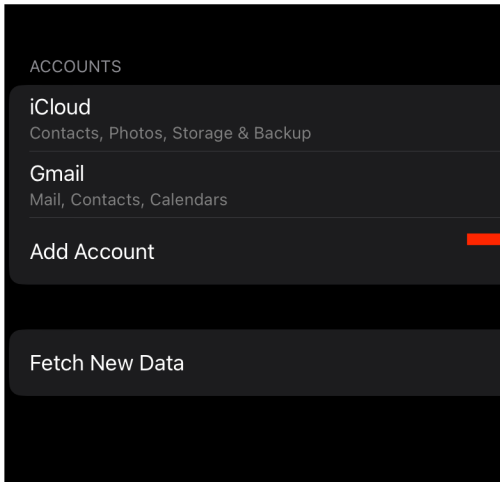
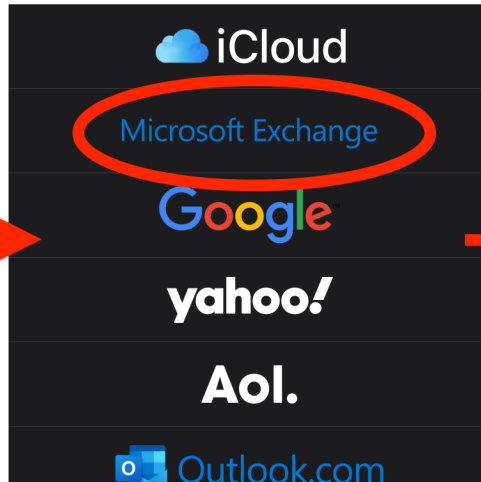


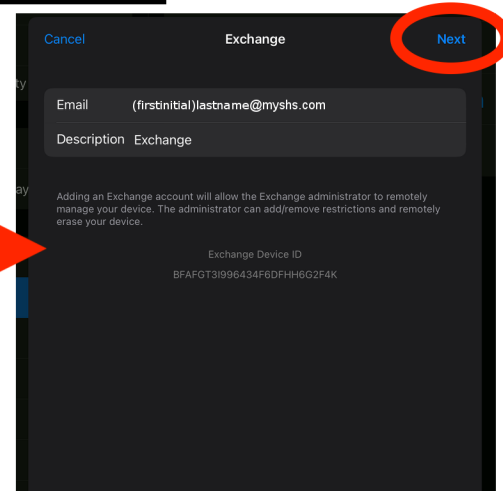
Safe Home Email Setup iPhone Instructions



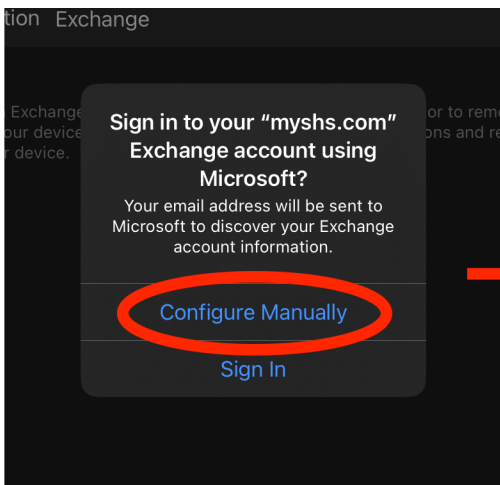
1. Access Mail in Settings & add Account.



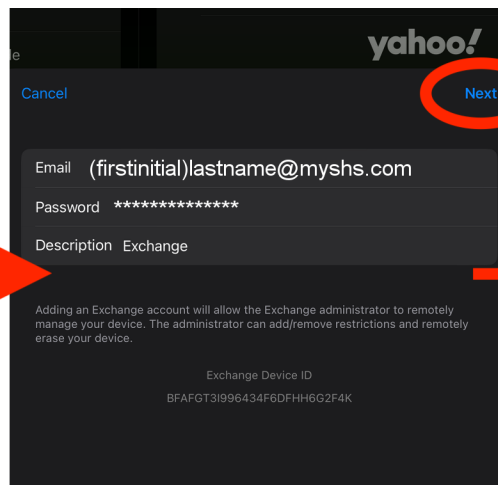
2. Select Microsoft Exchange.



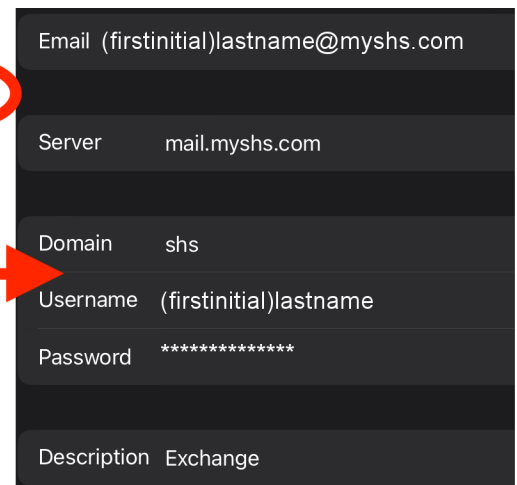
3. Input SHS email, then select, Next.



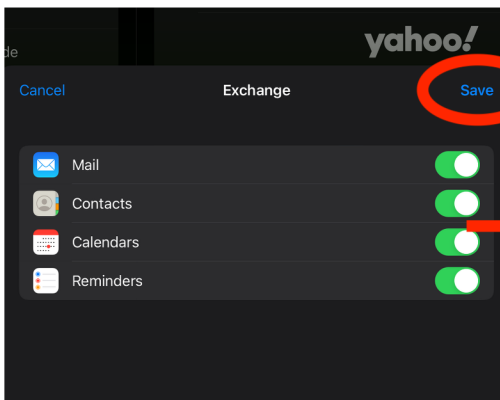
4. Select Configure Manually



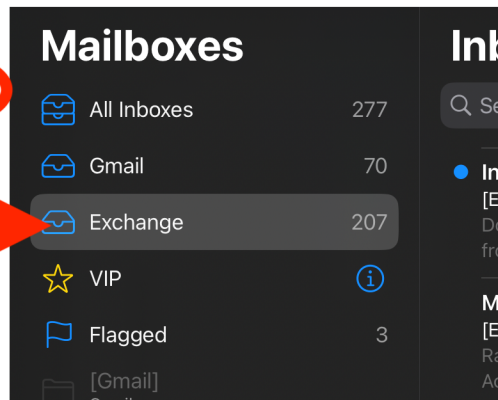
5. Input password, then select Next.



6. Change server & Domain input, then hit Next.



7. Select these, then hit Save.



8. The SHS email can now be located in your mailbox under Exchange.